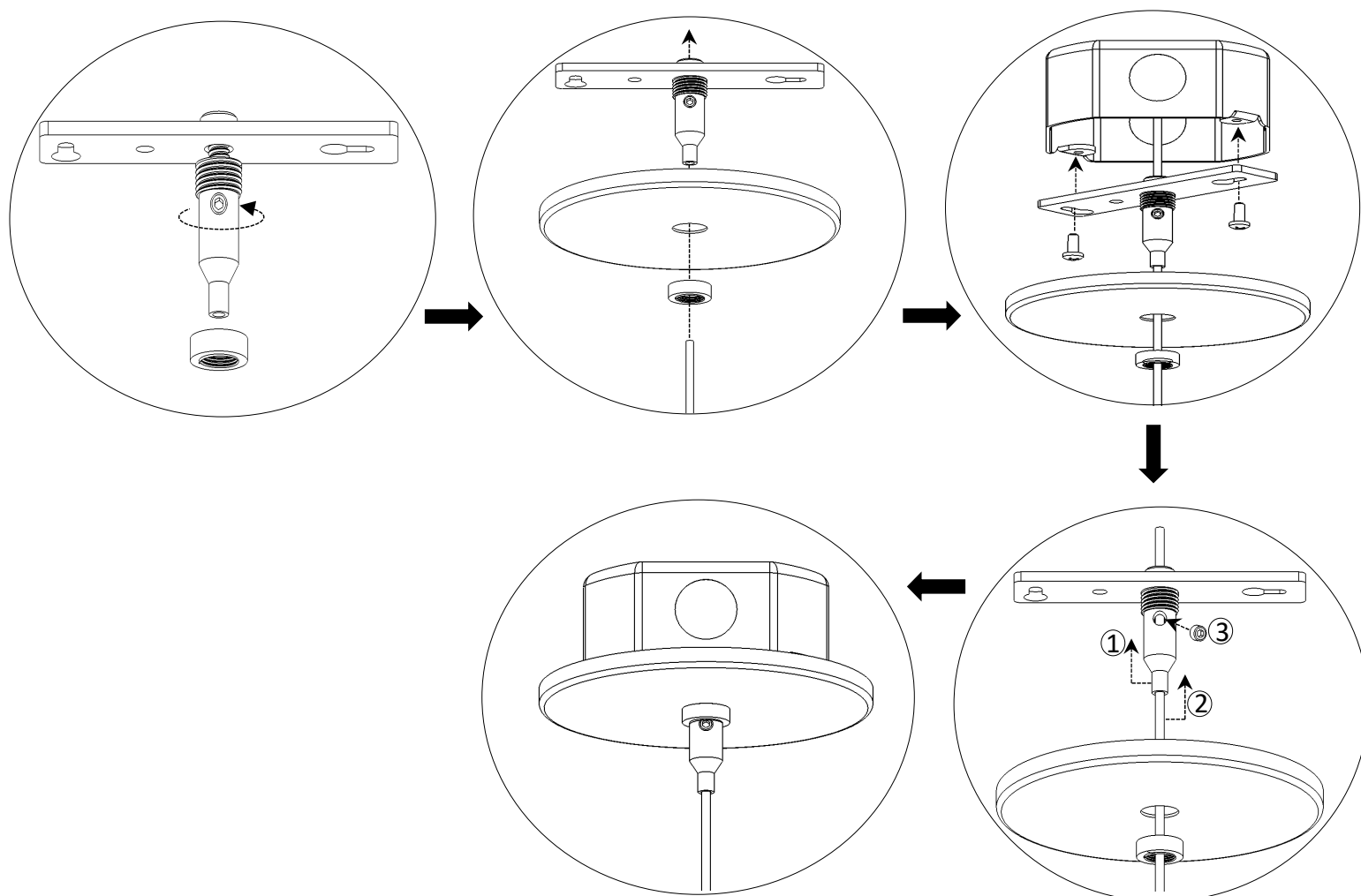


Ensure electrical circuit is disconnected before installation.



Luminaires must be installed in accordance with national electrical code and local regulation.



Secure junction box to structure with hardware suited to ceiling type.

- Attach gripper. Remove ring, slide ring and canopy cover on cable.
- Connect wires and secure bracket.
- Adjust cable to level fixture.
- Slide canopy up and thread ring.

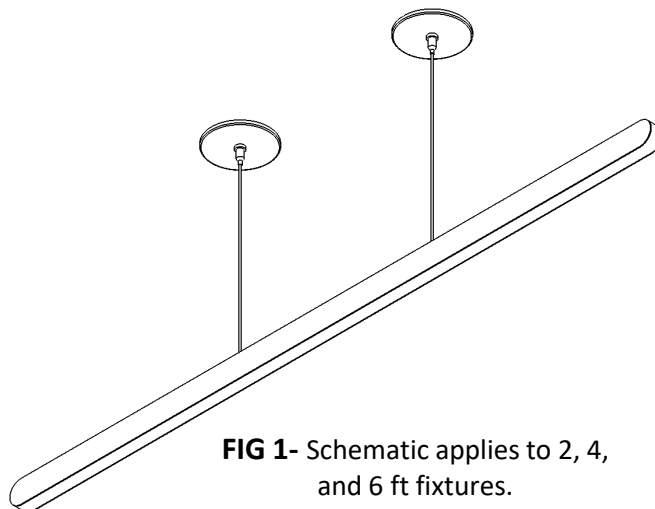
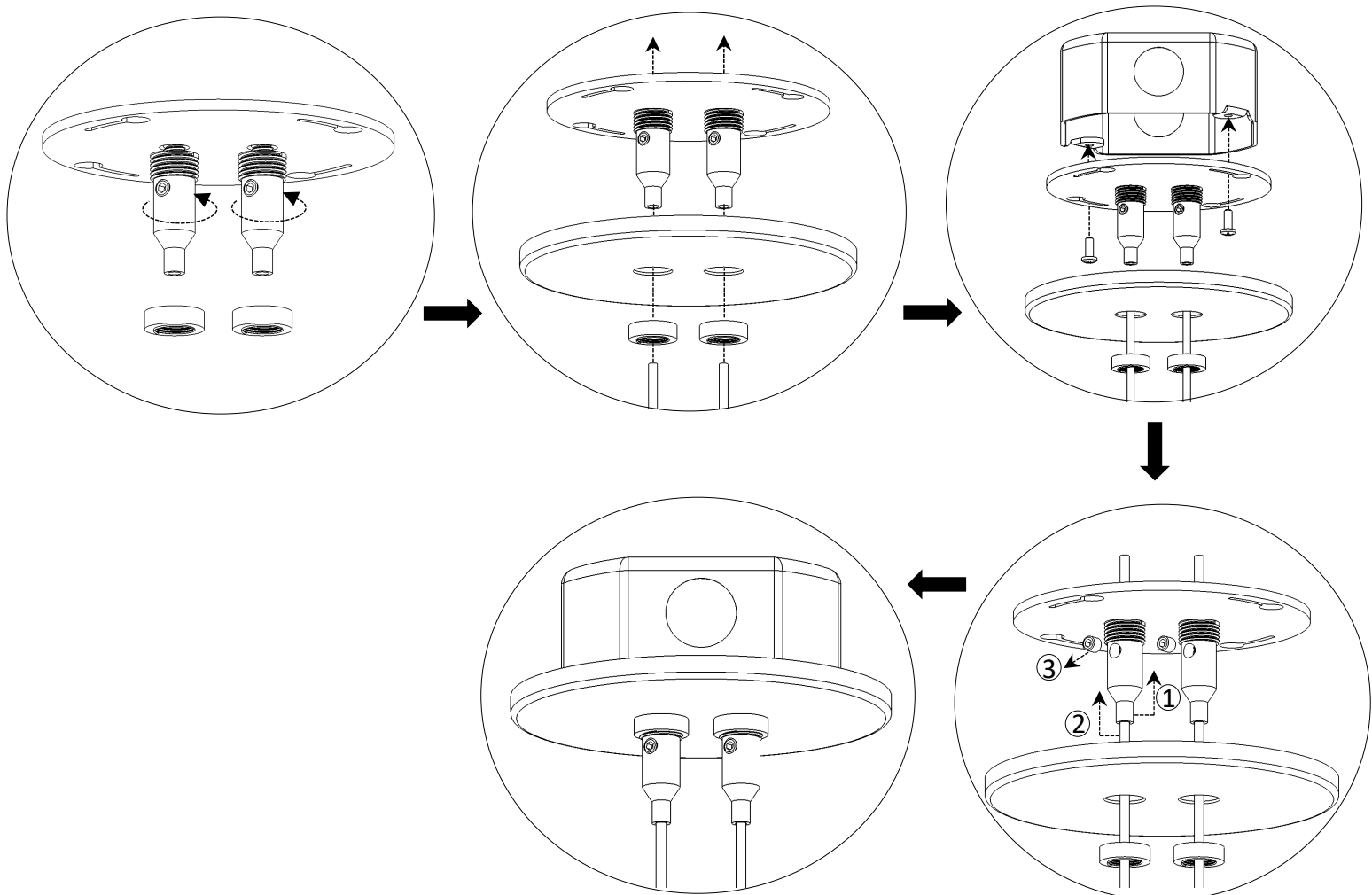


FIG 1- Schematic applies to 2, 4, and 6 ft fixtures.



Secure junction box to structure with hardware suited to ceiling type.

- Attach gripper. Remove ring, slide ring and canopy cover on cable.
- Connect wires and secure bracket.
- Adjust cable to level fixture.
- Slide canopy up and thread ring.

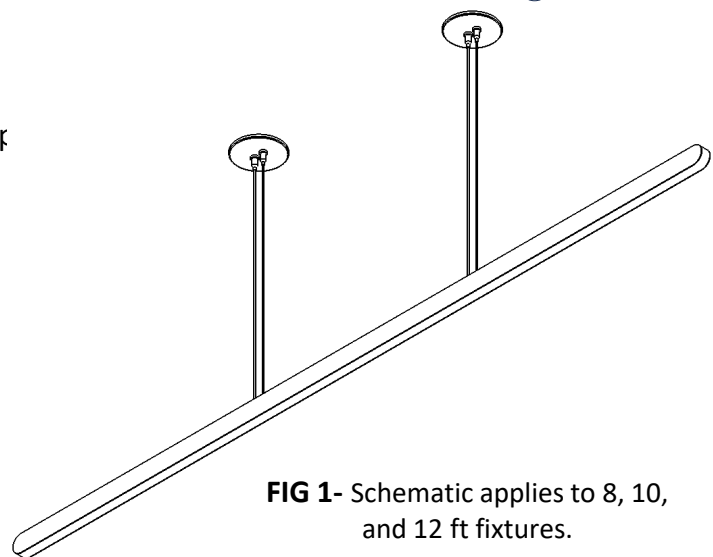
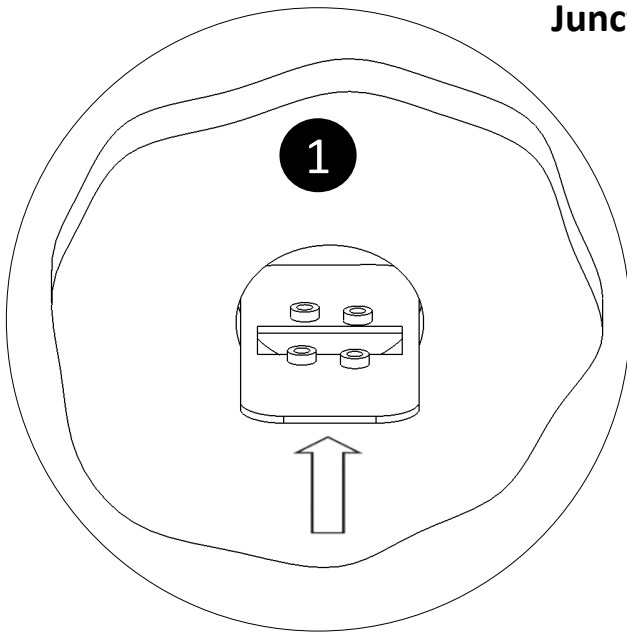
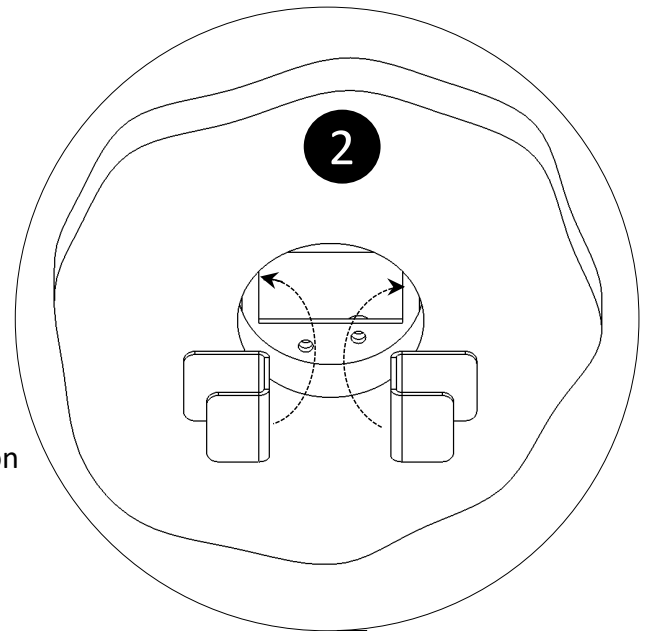


FIG 1- Schematic applies to 8, 10, and 12 ft fixtures.

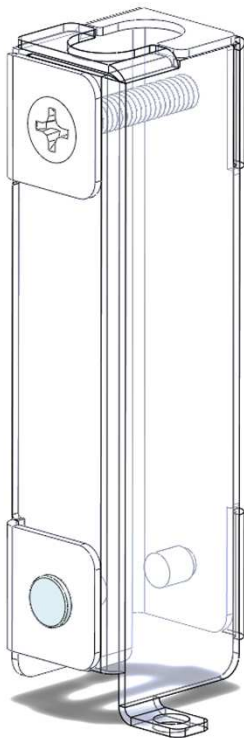
Junction Box Installation



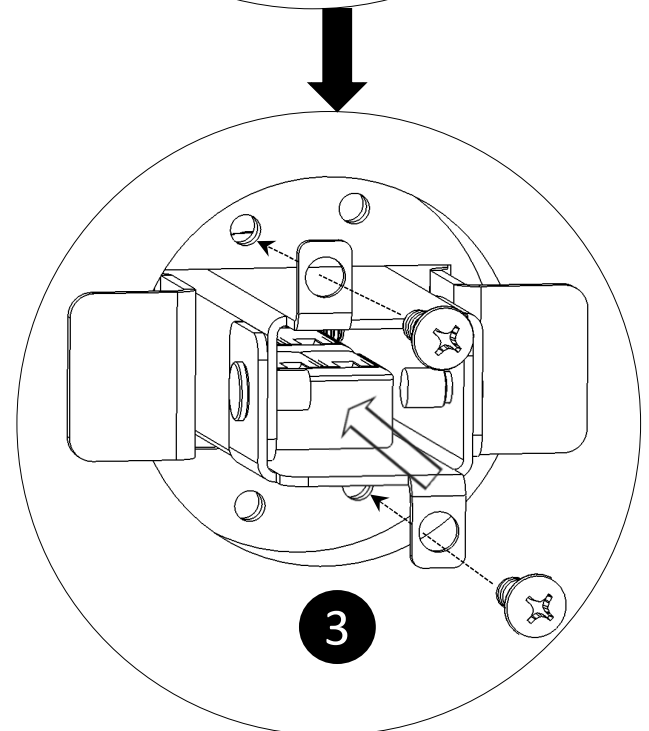
1- Insert the mounting plate through the ceiling opening with the PEM nuts oriented upward.



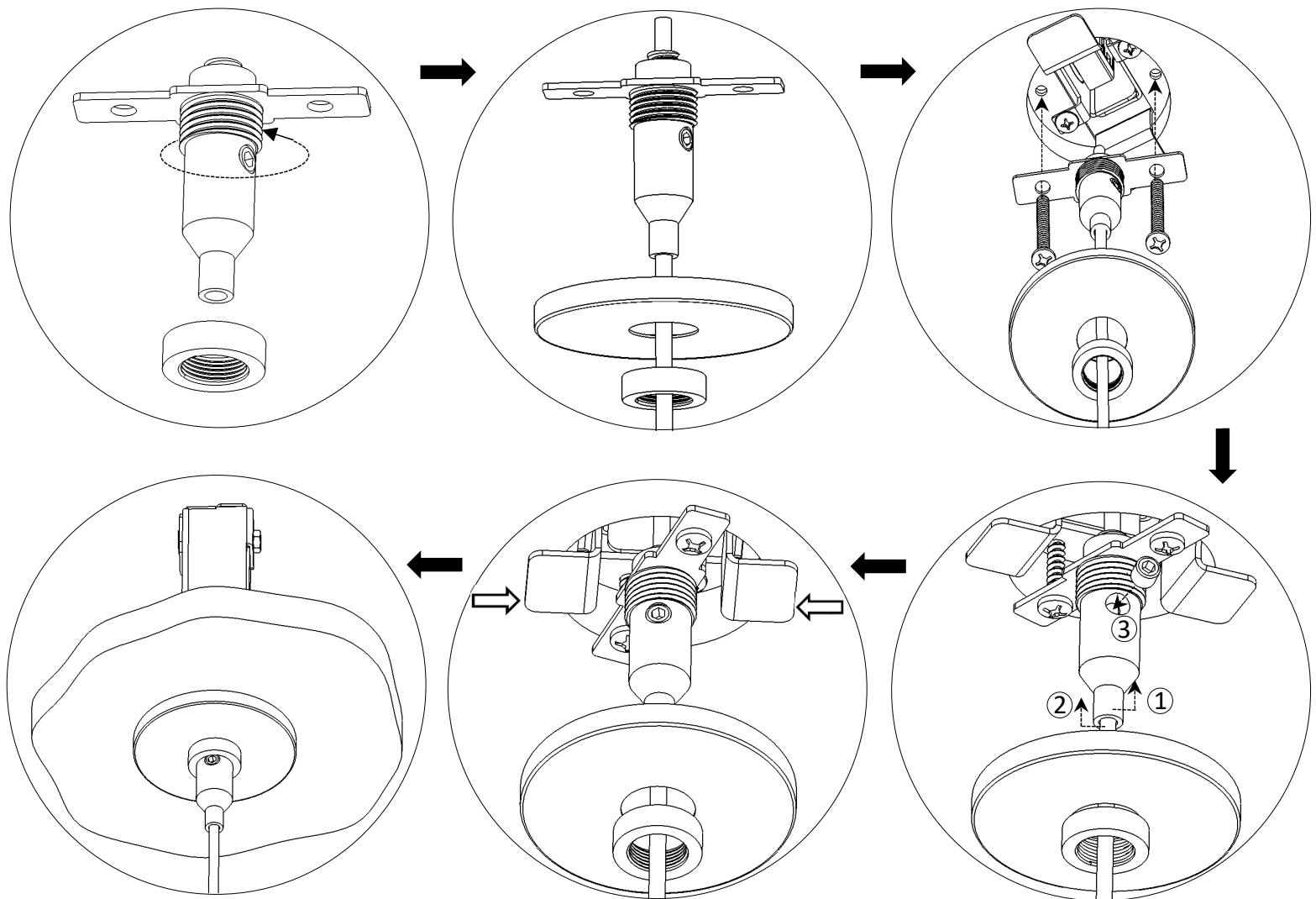
2- Install the side brackets to secure the plate in position and prevent movement. If the brackets are larger than the ceiling thickness, fill the gap accordingly.



The junction box vertical screw joins the two box sections and allows suspension for certain ceiling types.

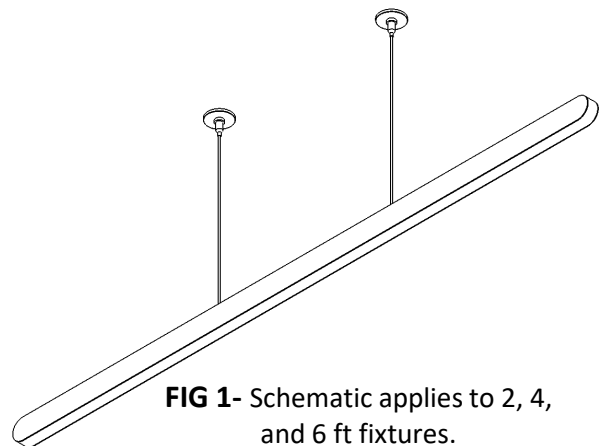


3- Insert the junction box through the open section and fasten it to the plate gently to avoid shifting the plate.



- ① Press top
- ② Set height
- ③ Tighten screw.

- Attach gripper. Remove ring, slide ring and canopy cover on cable.
- Connect wires and secure bracket.
- Adjust cable to level fixture.
- Push the brackets inward until positioned within the canopy cover's footprint.
- Slide canopy up and thread ring.



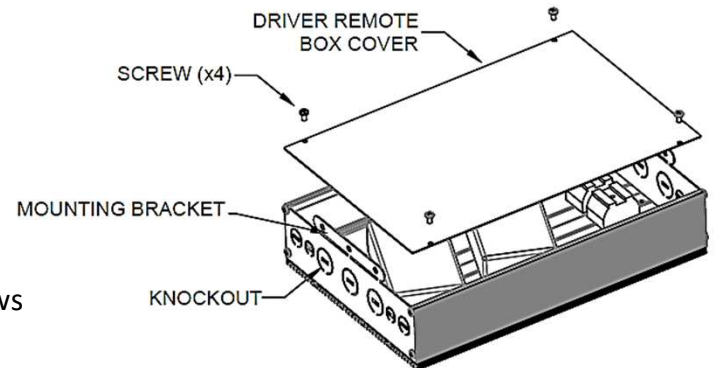


PLEASE ENSURE ELECTRICAL CIRCUIT IS DISCONNECTED BEFORE INSTALLATION



NEVER TOUCH THE YELLOW PORTION OF THE LED CHIP OR DAMAGE MAY OCCUR

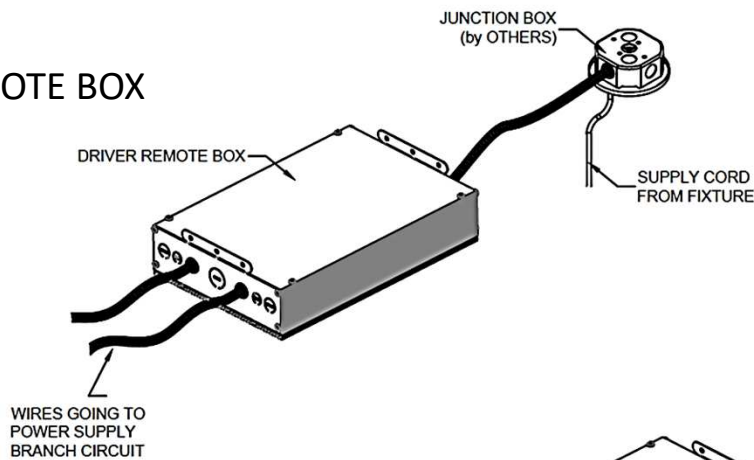
1. Remove the screws and the drivers' box cover
2. Remove the necessary knockouts
3. Attach the conduits "NOT SUPPLIED"
4. Make the wiring connections
5. Re-attach the cover and secure it with the supplied screws



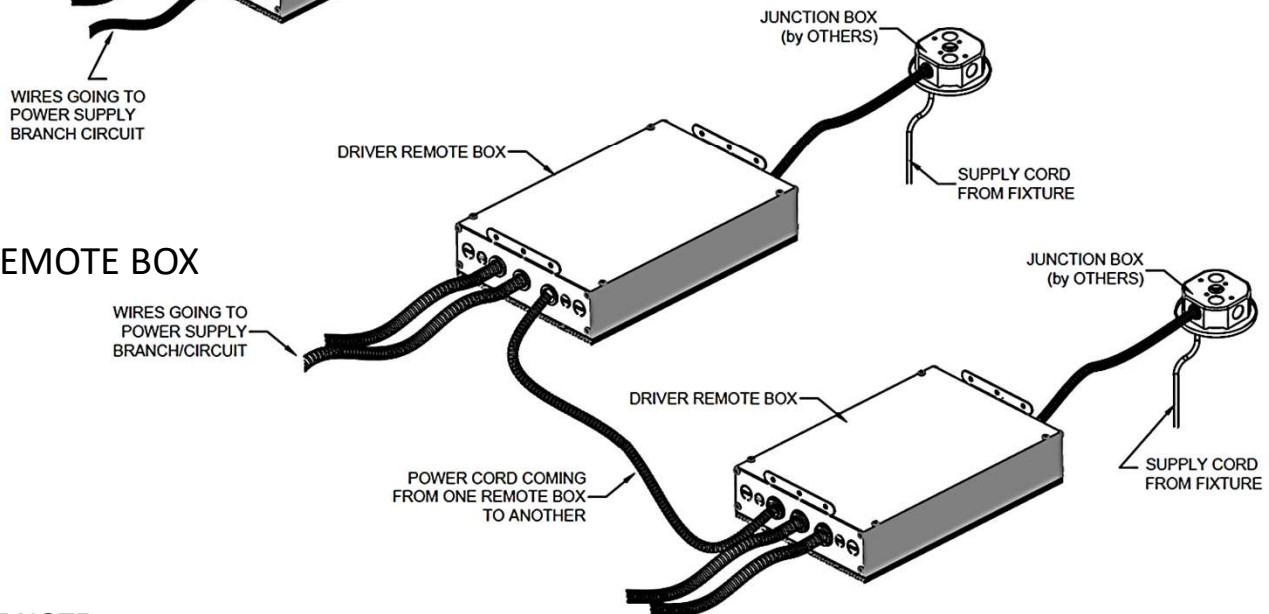
NOTE:

Use the mounting brackets to secure the box in place to the structure of the ceiling (MOUNTING SCREWS BY OTHERS)

SINGLE REMOTE BOX



MULTIPLE REMOTE BOX



IMPORTANT NOTE:

1. When more than one remote box is supplied, they all must be connected to the same power supply branch circuit
2. Remote boxes should be accessible after installation